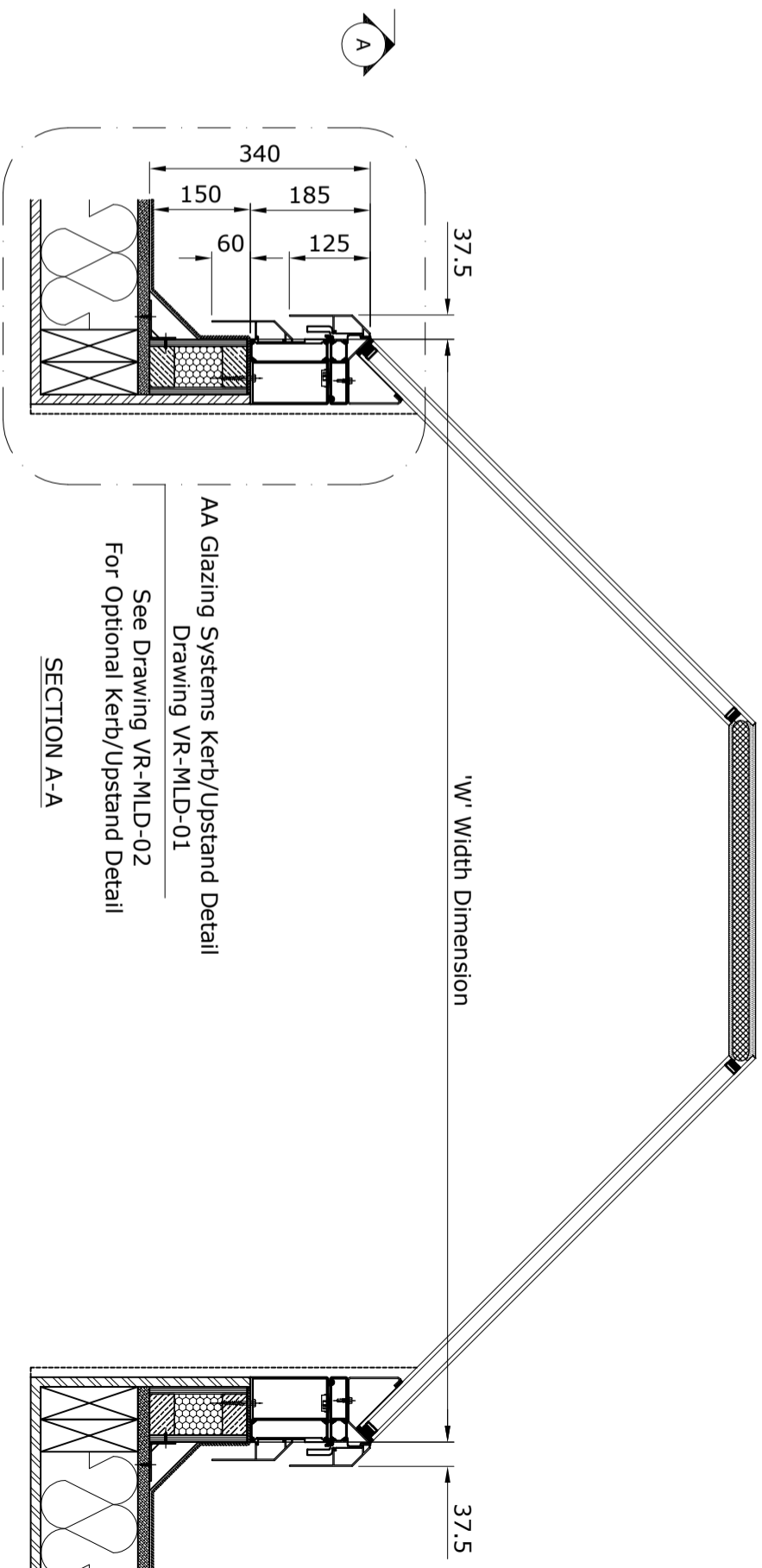
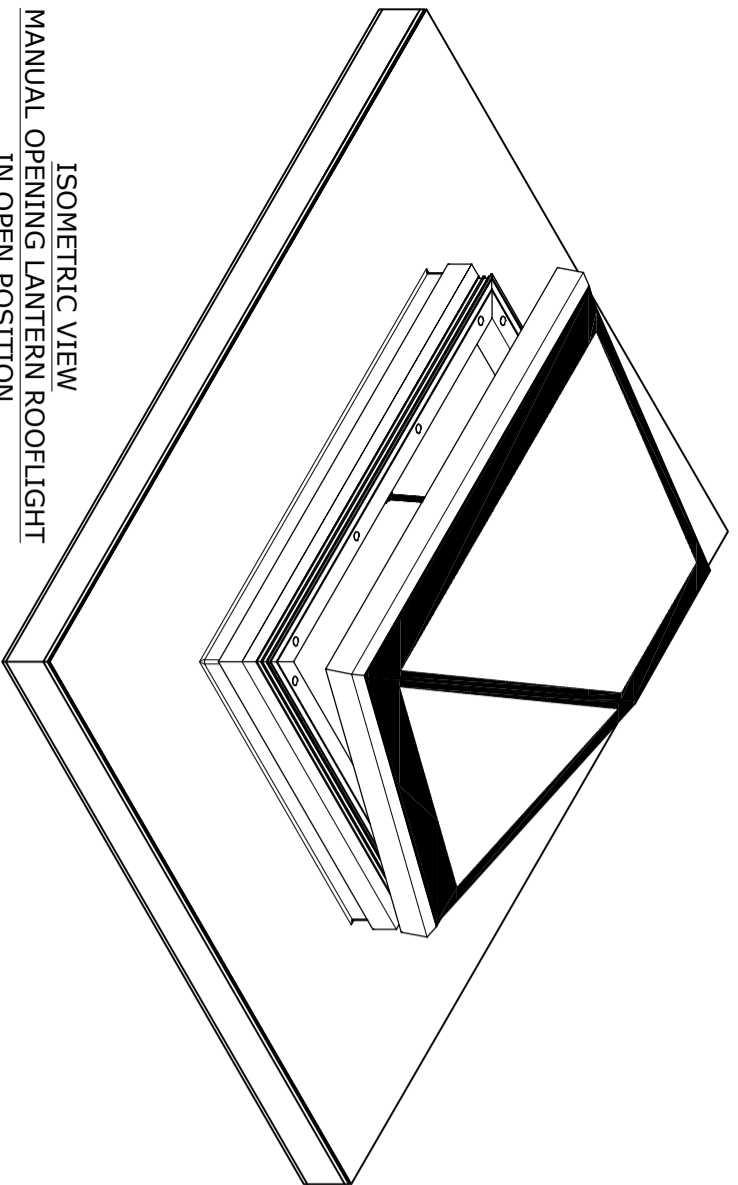


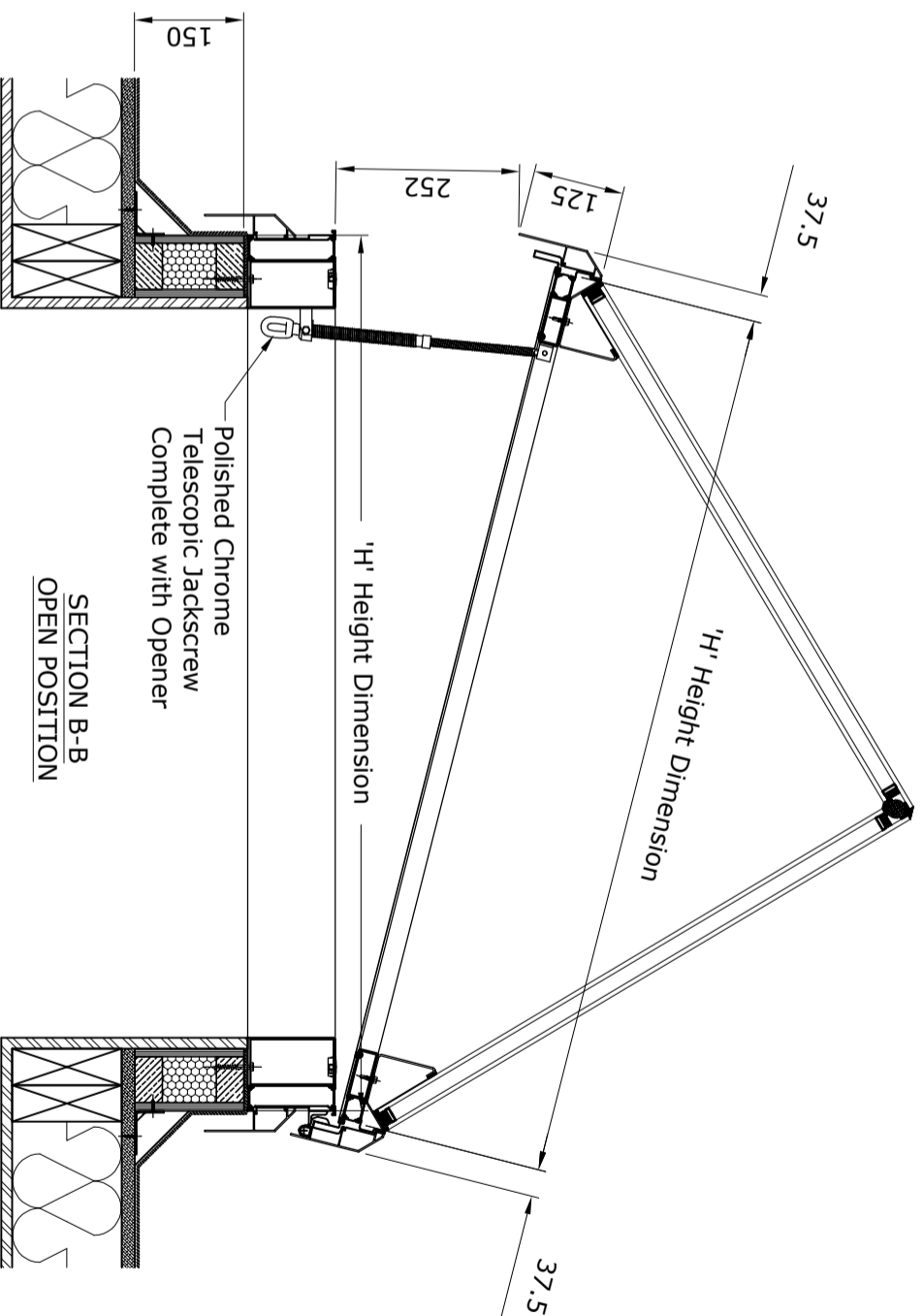
PLAN VIEW  
MANUAL OPENING LANTERN ROOFLIGHT  
IN CLOSED POSITION



AA Glazing Systems Kerb/Upstand Detail  
Drawing VR-MLD-01  
See Drawing VR-MLD-02  
For Optional Kerb/Upstand Detail  
SECTION A-A



ISOMETRIC VIEW  
MANUAL OPENING LANTERN ROOFLIGHT  
IN OPEN POSITION

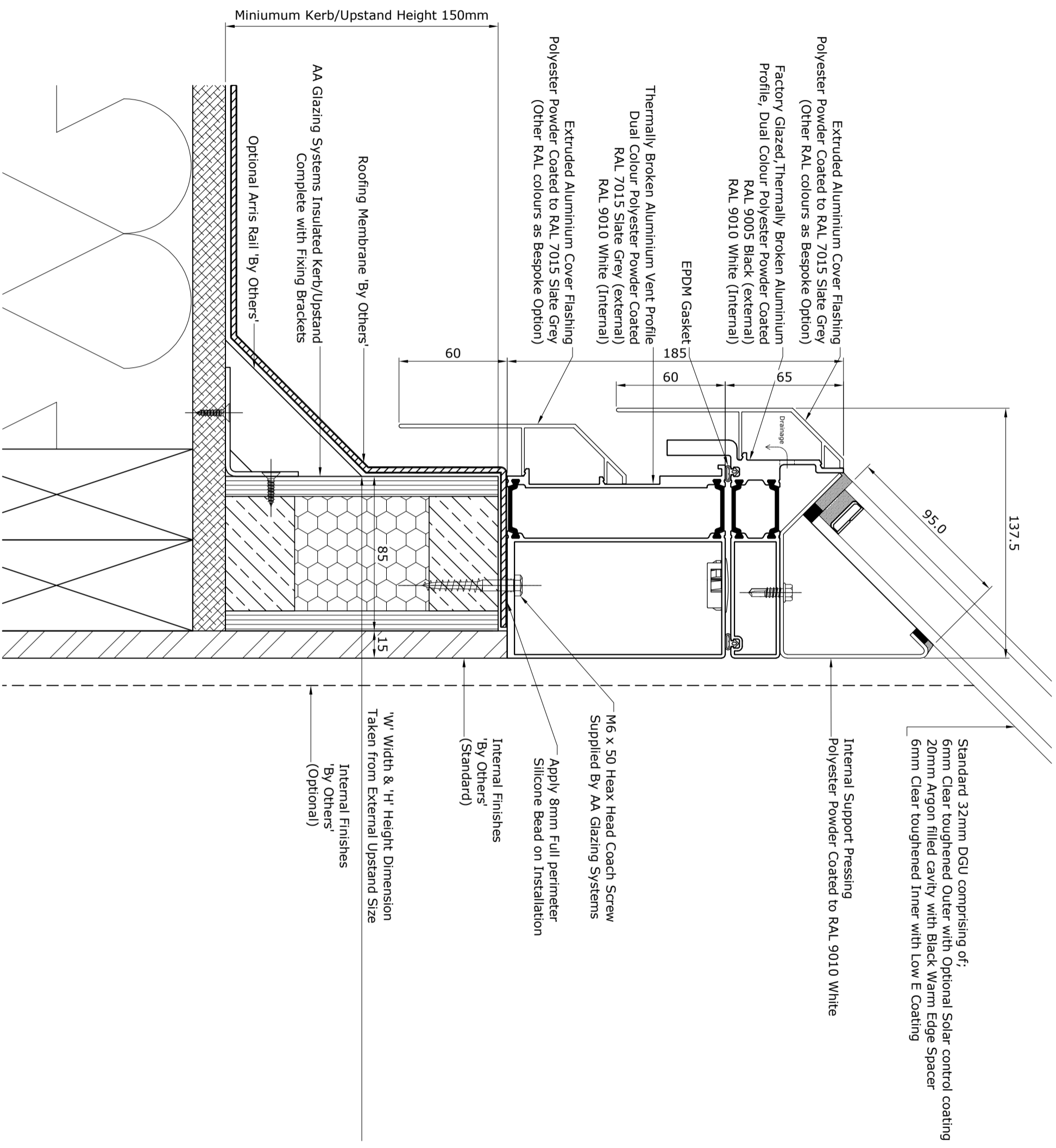


SECTION B-B  
OPEN POSITION

Project	Manual Lantern Opening Rooflight		
Title	Manual Lantern Opening Rooflight		
Scale	1:10 @ A3		
Contract No	VR-ML-01		
Rev	Date	Int	Notes
B	12-07-16	JW	Admin Update
A	23-10-13	GSH	First Issue
Drawn By Status: GSH Drawing No: VR-ML-01 Revision: B			



Registered Office: AA Glazing Systems Ltd, Unit 1 Mill Lane,  
Waterford Ind Est, Gt. Massingham, Norfolk, PE32 2HT  
Tel: 01485-520860 Fax: 01485-520861  
Email: sales@aa-glazing.co.uk  
Registered in England and Wales company no. 4346652  
VAT No. 792 777 469



Standard 32mm DGU comprising of;  
 6mm Clear toughened Outer with Optional Solar control coating  
 20mm Argon filled cavity with Black Warm Edge Spacer  
 6mm Clear toughened Inner with Low E Coating

Internal Support Pressing  
 Polyester Powder Coated to RAL 9010 White

M6 x 50 Heax Head Coach Screw  
 Supplied By AA Glazing Systems

Apply 8mm Full perimeter  
 Silicone Bead on Installation

Internal Finishes  
 'By Others'  
 (Standard)

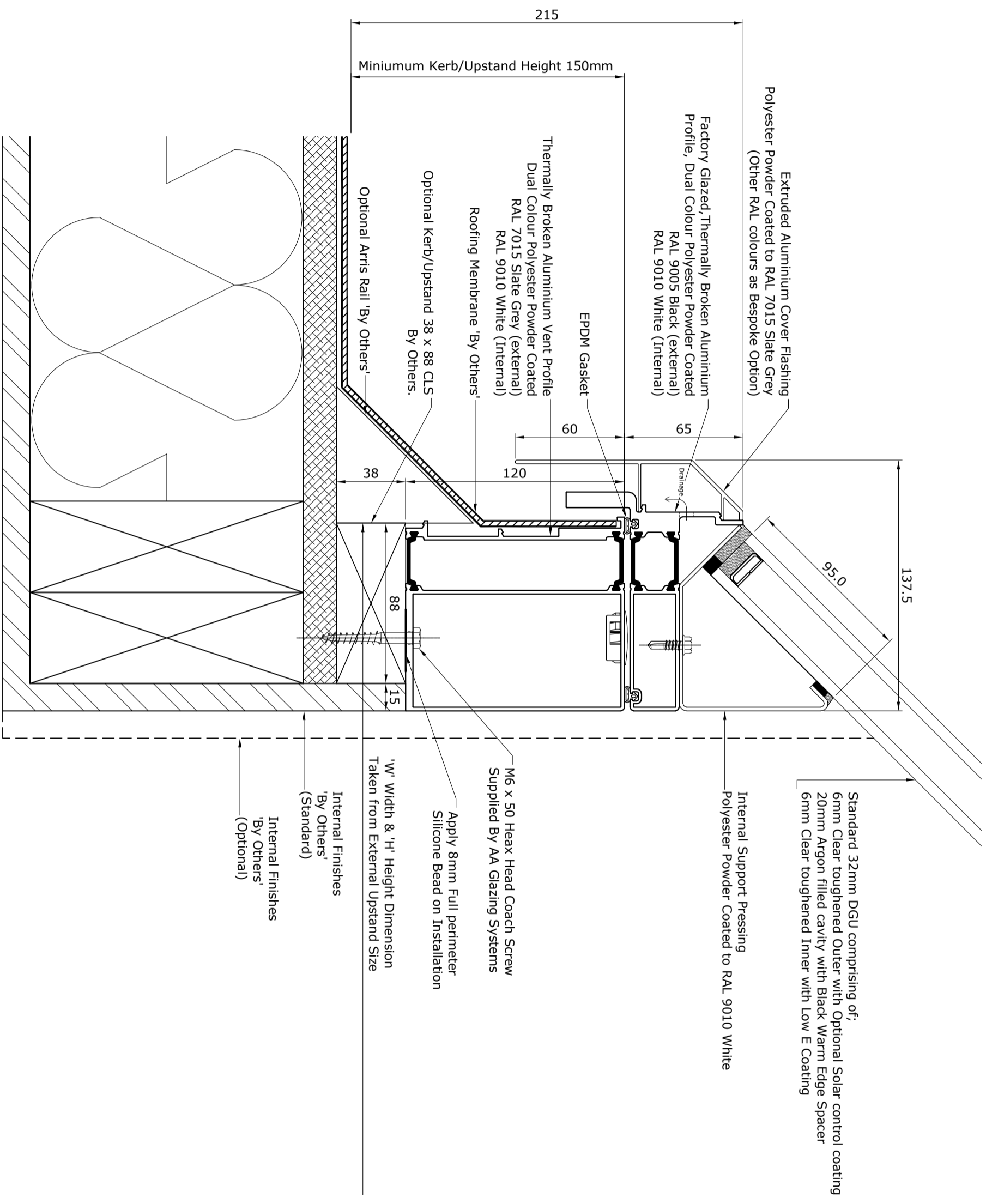
'W' Width & 'H' Height Dimension  
 Taken from External Upstand Size

Internal Finishes  
 'By Others'  
 (Optional)

Project	Manual Lantern Opening Rooftight		
Rev	Date	Int	Notes
A	23-10-13	GSH	First Issue
B	12-07-16	JW	Admin Update
Title			
Standard Kerb / Upstand Detail			
Scale	Date	Drawn By	Status
1:2 @ A3	23-10-13	GSH	
Contract No		Drawing No	Revision
		VR-MLD-01	B



Registered Office: AA Glazing Systems Ltd, Unit 1 Mill Lane,  
 Waterford Ind Est, Gt. Massingham, Norfolk PE32 2HT  
 Tel: 01485-520860 Fax: 01485-520861  
 Email: sales@aaaglazing.co.uk  
 Registered in England and Wales company no. 4346652  
 VAT No. 792 777 469



Standard 32mm DGU comprising of:  
 6mm Clear toughened Outer with Optional Solar control coating  
 20mm Argon filled cavity with Black Warm Edge Spacer  
 6mm Clear toughened Inner with Low E Coating

Internal Support Pressing  
 Polyester Powder Coated to RAL 9010 White

M6 x 50 Heax Head Coach Screw  
 Supplied By AA Glazing Systems

Apply 8mm Full perimeter  
 Silicone Bead on Installation

'w' Width & 'h' Height Dimension  
 Taken from External Upstand Size

Internal Finishes  
 'By Others'  
 (Standard)

Internal Finishes  
 'By Others'  
 (Optional)

Project	Manual Lantern Opening Rooftight		
Rev	Date	Int	Notes
A	23-10-13	GSH	First Issue
B	12-07-16	LW	Admin Update
Optional Kerb / Upstand Detail			
Scale	1:2 @ A3	Drawn By	Status
Date	23-10-13	GSH	
Contract No		Drawing No	Revision
		VR-MLD-02	B



Registered Office: AA Glazing Systems Ltd, Unit 1 Mill Lane,  
 Waterford Ind Est, Gt. Massingham, Norfolk PE32 2HT  
 Tel: 01485-520860 Fax: 01485-520861  
 Email: sales@aaaglazing.co.uk  
 Registered in England and Wales company no. 4346652  
 VAT No. 792 777 469