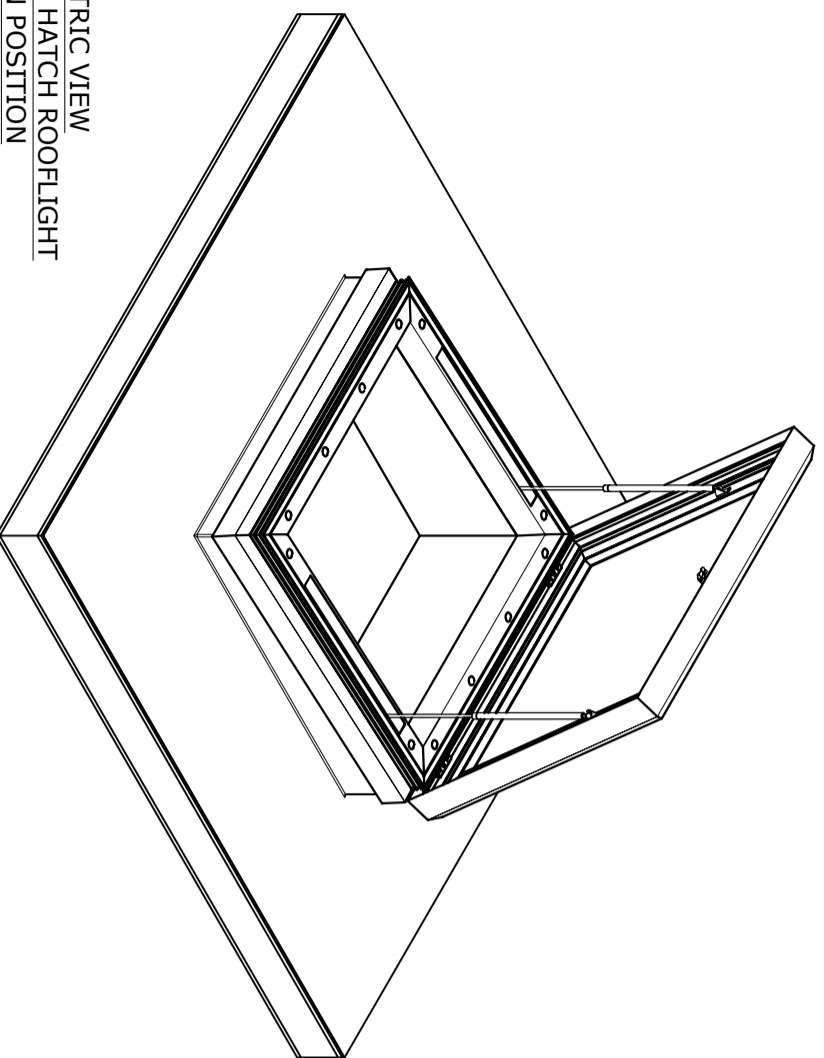
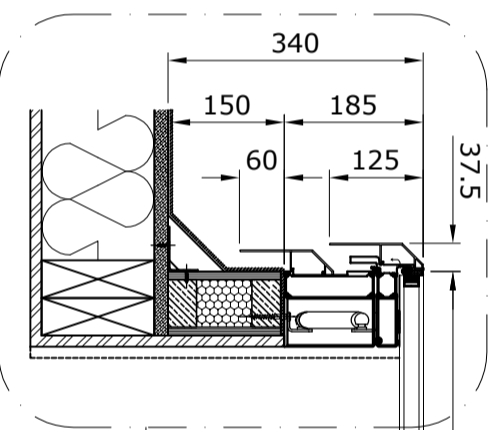


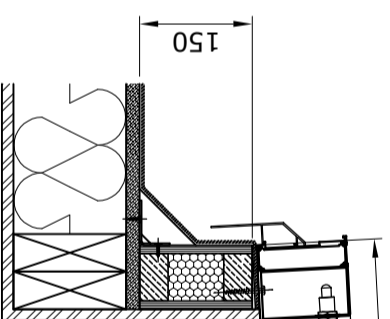
PLAN VIEW  
MANUAL ACCESS HATCH ROOFLIGHT  
IN CLOSED POSITION



ISOMETRIC VIEW  
MANUAL ACCESS HATCH ROOFLIGHT  
IN OPEN POSITION



'w' Width Dimension

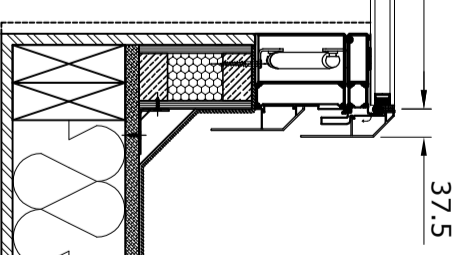


SECTION B-B  
OPEN POSITION

'h' Height Dimension

'h' Height Dimension

AA Glazing Systems Kerb/Upstand Detail  
Drawing VR-MAD-01  
Optional Kerb/Upstand Detail  
See Drawing VR-MAD-02

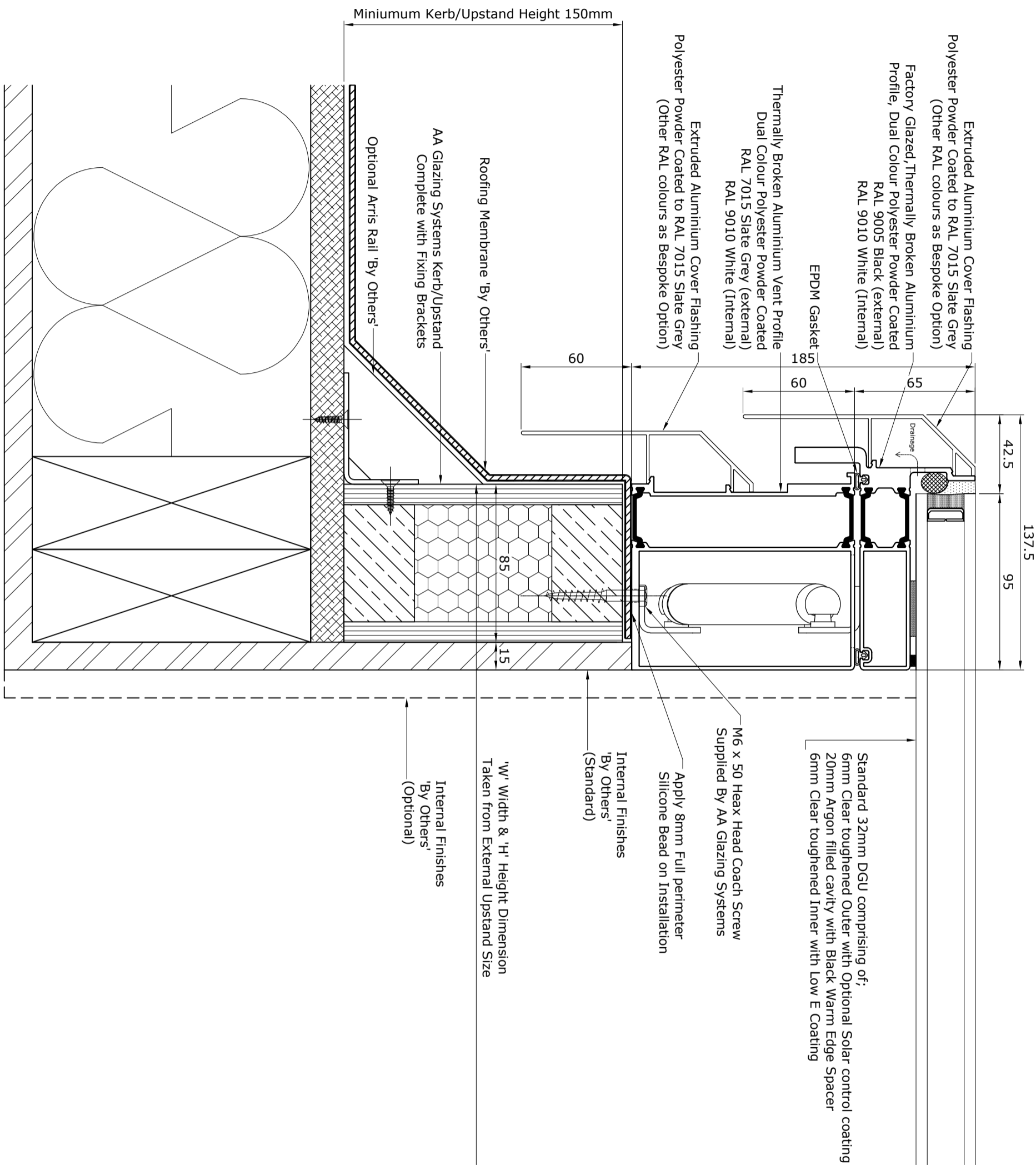


SECTION A-A

Title		Manual Access Hatch Rooflight	
Scale	1:10 @ A3	Drawn By	GSH
Contract No.	23-10-13	Status	GSH
Project		VR-MA-01	Revision
Rooflight			B
Rev	Date	Int	Notes
B	12-07-16	JW	Admin Update
A	23-10-13	GSH	First Issue



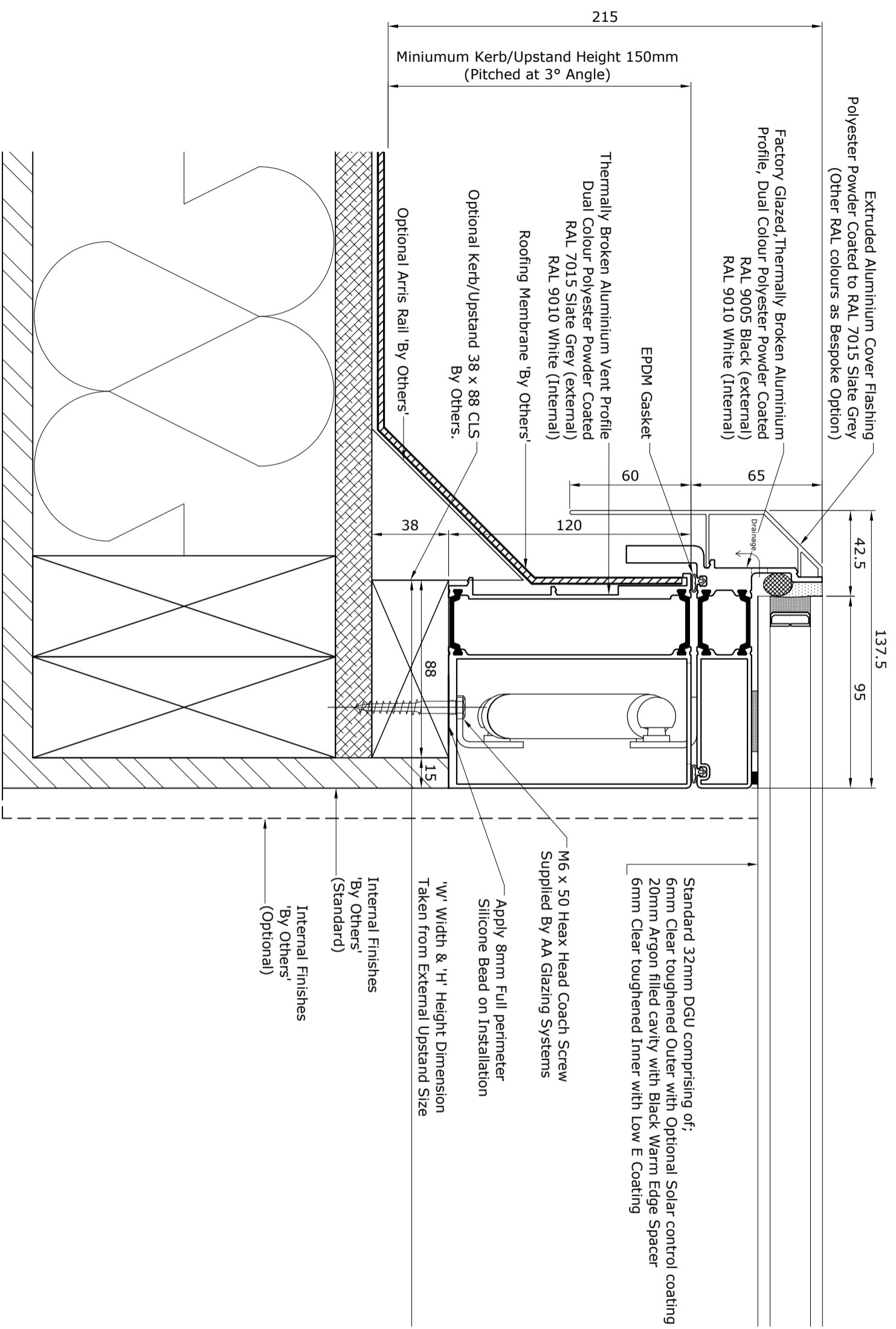
Registered Office: AA Glazing Systems Ltd, Unit Mill Lane,  
Waterford Ind Est, Gt. Marnsingham, Norfolk, PE32 2HT  
Tel: 01485-520860 Fax: 01485-520861  
Email: sales@aaaglazing.co.uk  
Registered in England and Wales company no. 4346652  
VAT No. 792 777 488



Project	Rooflight		
Rev	Date	Int	Notes
A	23-10-13	GSH	First Issue
B	12-07-16	JW	Admin Update
Title			
Standard Kerb / Upstand Detail			
Scale	1:2 @ A3	Drawn By	Status
Date	23-10-13	GSH	
Contract No		Drawing No	Revision
		VR-MAD-01	B



Registered Office: AA Glazing Systems Ltd, Unit Mill Lane,  
 Watford Ind Est, Gt. Marnham, Norfolk, PE32 2HT  
 Tel: 01485-520860 Fax: 01485-520861  
 Email: sales@aaaglazing.co.uk  
 Registered in England and Wales company no. 4346652  
 VAT No. 792 777 488



Project	Rooflight		
Rev	Date	Int	Notes
A	23-10-13	GSH	First Issue
B	12-07-16	JW	Admin Update
Title			
Standard Kerb / Upstand Detail			
Scale	Date	Drawn By	Status
1:2 @ A3	23-10-13	GSH	
Contract No		Drawing No	Revision
		VR-MAD-02	B



Registered Office: AA Glazing Systems Ltd, Unit Mill Lane,  
Waterford Ind Est, Gt. Massingham, Norfolk, PE32 2HT  
Tel: 01485-520860 Fax: 01485-520861  
Email: sales@aaaglazing.co.uk  
Registered in England and Wales company no. 4346652  
VAT No. 792 777 488